

282 East St, Plainville
1140 Square Foot Retail/Office Space on Route 10
Seller Financing Available For Qualified Buyers



FOR SALE
\$369,000

- ⇒ 1,140 SF
- ⇒ Acres: .17
- ⇒ Heating: Oil
- ⇒ Public Water & Sewer
- ⇒ Frontage: 85 Ft.
- ⇒ Zone: GC
- ⇒ Taxes: 4,556
- ⇒ Traffic Count: 9900
- ⇒ Year Built: 1940

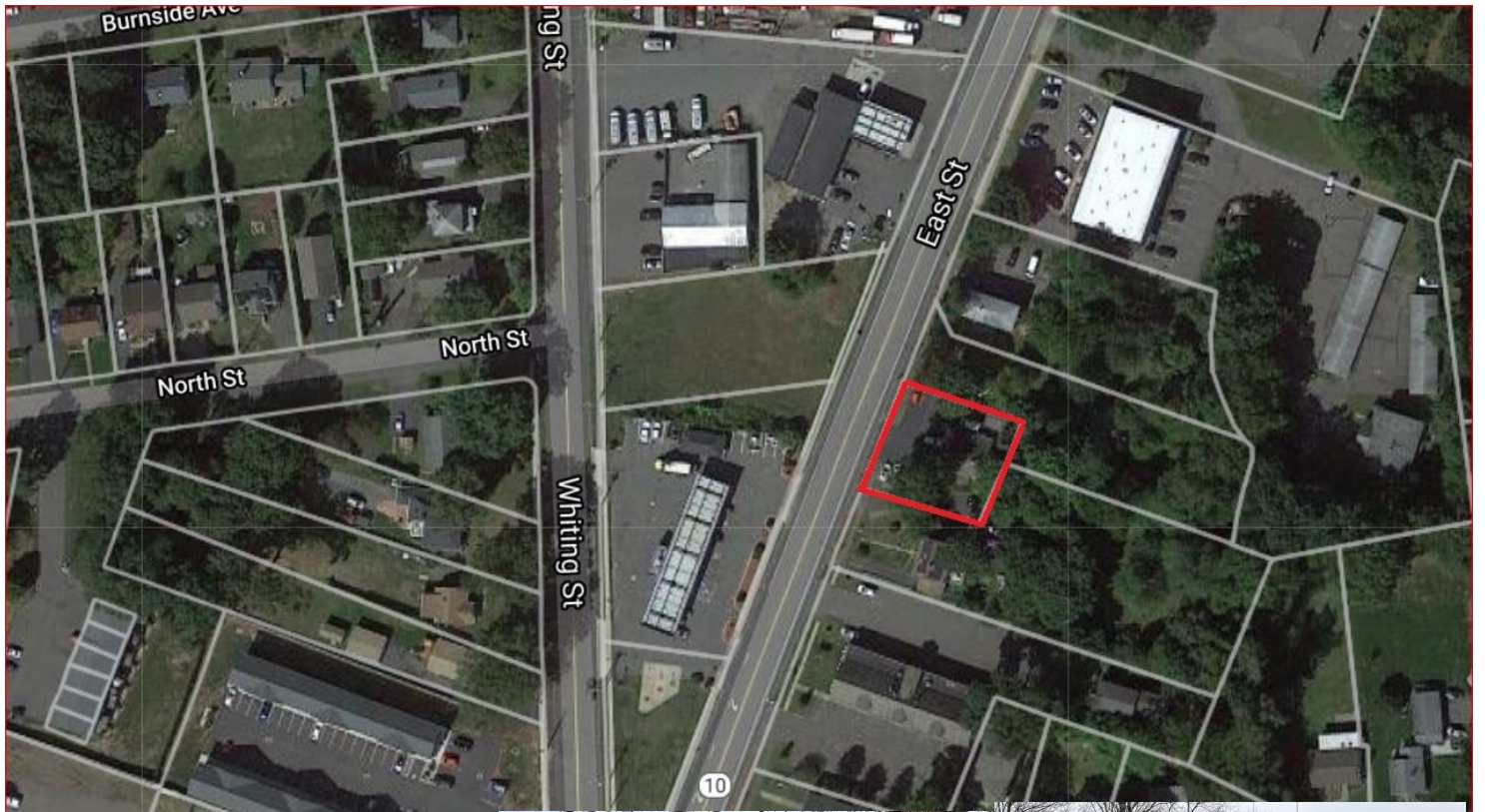
LYMAN

REAL ESTATE BROKERAGE & DEVELOPMENT

www.LymanRE.com

RON LYMAN

Main Office:
1160 Boston Post Rd.
Westbrook, CT 06498
Mailing Address:
73 Second Ave.
Westbrook, CT 06498
860-887-5000 x1 Office
860-884-4666 Cell
ronl@lymanre.com



282 East St, Plainville

Demographics	1 MILE	3 MILES	5 MILES
Total Population	8,991	43,216	157,151
Total Households	4,040	18,371	64,482
Average Household Income	78,334	91,450	85,136

All information stated is from sources deemed reliable and is submitted subject to errors, omissions, changes of other terms and conditions, prior sales, financing or withdrawal without notice. Buyer/Tenant agents will be eligible for a portion of commission only if they have an existing signed representation.

